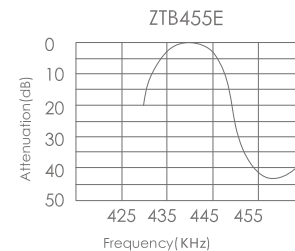
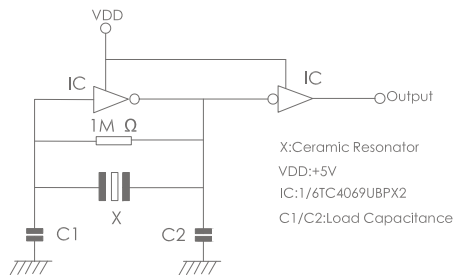
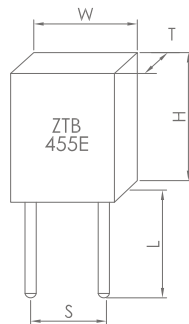
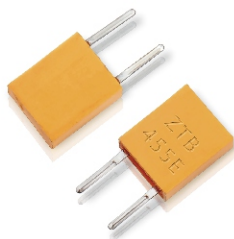


Dimensions(mm)



GENERIC SPECIFICATION

Part Number	ZTB□□□D	ZTB□□□D	ZTB□□□P	ZTB□□□E	ZTB□□□P	ZTB□□□J	ZTB□□□J
Frequency Range (KHz)	190 to 249	250 to 374	375 to 429	430 to 509	510 to 699	700 to 999	1000 to 1250
Frequency Accuracy (at 25°C) (%)	±1.0KHz	±1.0KHz	±2.0KHz	±2.0KHz	±2.0KHz	±0.5	±0.5
Stability in Temp. -20°C to +80°C (%)	±0.3	±0.3	±0.3	±0.3	±0.3	±0.3	±0.3
Aging For Ten Years (%)	±0.3	±0.3	±0.3	±0.3	±0.3	±0.3	±0.3
Resonator Resistance (Ω)Max	20	20	20	20	30	70	100
Load Capacitance C1 (pF)	33C	22C	120	100	100	100	100
Load Capacitance C2 (pF)	470	470	470	100	100	100	100

Frequency Range (KHz)	W(mm) Width	T(mm) Thickness	H(mm) Height	S(mm) Lead Space	L(mm) Lead Space
190 to 249	13.5	3.8	14.7	10.0	8.0
250 to 374	11.0	3.8	12.2	7.7	7.0
375 to 400	7.9	3.6	9.3	5.0	7.7
401 to 699	7.0	3.5	9.0	5.0	4.0(6.0)
700 to 1250	5.2	2.8	6.8	2.5	3.5(5.0)
1000	5.1	2.3	6.3	2.5	4.0